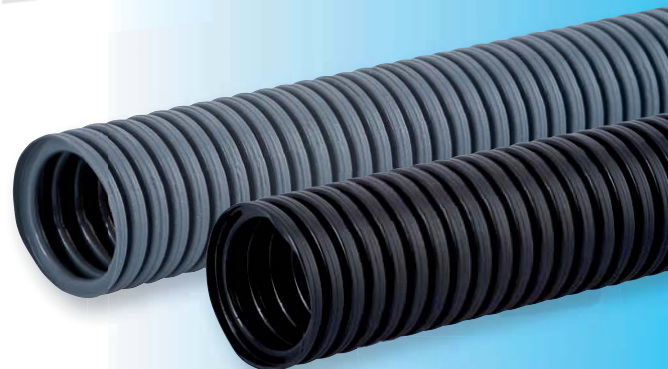


Wellrohrsysteme

DN Wellrohrsysteme

Sie finden in diesem Kapitel:

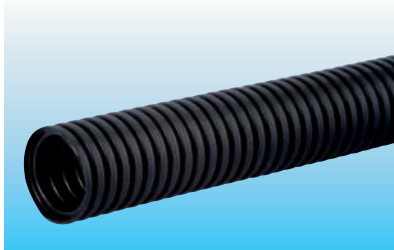
- DN Wellrohre aus Polyamid
- SM-Nippel zur Schnellmontage der DN Wellrohre
- Winkelsysteme für DN-Wellrohre



Metr.
PG NPT

SM-WS-PA

DN



Material Polyamid

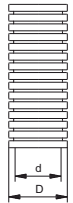


RoHS

Dauergebrauchstemperatur -40 °C – 110 °C



Lieferfarbe grau (RAL 7031), schwarz (RAL 9005)



Größe DN	Typ	d mm	D mm	Best.-Nr. grau	Best.-Nr. schwarz
10	PA	10	13	1.510.0900.14	1.510.0901.14
12	PA	12	15,5	1.510.1100.14	1.510.1101.14
14	PA	14	18,5	1.510.1300.14	1.510.1301.14
17	PA	16,5	21	1.510.1600.14	1.510.1601.14
23	PA	22,5	28,5	1.510.2100.14	1.510.2101.14
29	PA	28,5	34,5	1.510.2900.14	1.510.2901.14
37	PA	36	42	1.510.3600.14	1.510.3601.14
50	PA	47,5	54	1.510.4800.14	1.510.4801.14

SM-N

Metr., PG, NPT



Material Polyamid



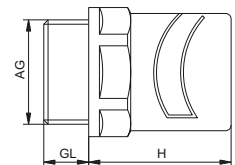
RoHS

Schutzart IP 54, mit O-Ring am Anschlussgewinde und starrer Schlauchmontage IP 65



Dauergebrauchstemperatur -20 °C – 80 °C

Lieferfarbe grau (RAL 7031), schwarz (RAL 9005)



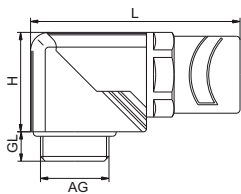
AG	GL mm	H mm	mm	DN	Best.-Nr. grau	Best.-Nr. schwarz	AG	GL mm	H mm	mm	DN	Best.-Nr. grau	Best.-Nr. schwarz
M 16 x 1,5	8	23	17	10	1.511.1600.50	1.511.1601.50	NPT 3/8"	15	23	17	10	1.511.3800.70	1.511.3801.70
M 20 x 1,5	9	28	24	14	1.511.2000.50	1.511.2001.50	NPT 1/2"	13	29	27	17	1.511.1216.70	1.511.1217.70
M 25 x 1,5	11	32	35	23	1.511.2500.50	1.511.2501.50	NPT 3/4"	13	32	35	23	1.511.3400.70	1.511.3401.70
M 32 x 1,5	11	35	42	29	1.511.3200.50	1.511.3201.50	NPT 1"	15	35	42	29	1.511.1000.70	1.511.1001.70
PG 9	8	23	17	10	1.511.0900.14	1.511.0901.14							
PG 11	8	25	21	12	1.511.1100.14	1.511.1101.14							
PG 13,5	9	28	24	14	1.511.1300.14	1.511.1301.14							
PG 16	10	29	27	17	1.511.1600.14	1.511.1601.14							
PG 21	11	32	35	23	1.511.2100.14	1.511.2101.14							
PG 29	11	35	42	29	1.511.2900.14	1.511.2901.14							
PG 36	13	41	50	37	1.511.3600.14	1.511.3601.14							
PG 48	14	46	64	50	1.511.4800.14	1.511.4801.14							

SM-W

Metr., PG, NPT



Material	Polyamid
O-Ring	NBR
Schutzart	IP 54 bei starrer Schlauchmontage IP 65
Dauergebrauchstemperatur	-20 °C – 80 °C
Lieferfarbe	schwarz (RAL 9005)



AG	GL mm	H mm	L mm	mm	passend zu SM-Wellenschlauch DN	Best.-Nr.
M 16 x 1,5	8	23	43	19	10	1.513.1601.50
M 20 x 1,5	9	30,5	52	24	14	1.513.2001.50
M 25 x 1,5	11	40	70	33	23	1.513.2501.50
M 32 x 1,5	11	51,5	83	42	29	1.513.3201.50
PG 9	8	23	43	19	10	1.513.0901.14
PG 11	8	27	48	22	12	1.513.1101.14
PG 13,5	9	30,5	52	24	14	1.513.1301.14
PG 16	10	32,5	56	27	17	1.513.1601.14
PG 21	11	40	70	33	23	1.513.2101.14
PG 29	11	51,5	83	42	29	1.513.2901.14
NPT 3/8"	15	23	43	19	10	1.513.3801.70
NPT 1/2"	13	32,5	56	27	17	1.513.1217.70
NPT 3/4"	13	40	70	33	23	1.513.3401.70
NPT 1"	15	51,5	83	42	29	1.513.1001.70